

**RICOH**  
imagine. change.

...vision...far beyond imagination.



Digital Binoculars

## RICOH Enhanced Binoculars

RICOH NV-10A / RICOH NV-10A KIT

Ensure visibility in dense fog or darkness while minimizing camera shake.

Atmospheric  
interference  
reduction  
function

Image  
stabilization  
function

Twilight  
Mode

Waterproofing/  
Dustproofing

Movie  
Recording

GPS

Electronic  
Compass

Toshiba Write Once memory cards

The photograph is an image.

## Digital binoculars with an anti-vibration mechanism for clear viewing with no image shake even in fog or pitch-black conditions.

Designed to give you a clear view of the subject you want to look at, even in the harshest of environments. Equipped with waterproofing and dustproofing and a functional design that is easy to use even with gloves on. Record still images and movies of viewed scenes to SD card. Display latitude and longitude of the shooting location with the GPS function.



Waterproof /Dustproof



Movie Recording



GPS



Electronic Compass



NOTE: This equipment has been tested and found to comply with the limits for a Class A digital device, pursuant to Part 15 of the FCC Rules. These limits are designed to provide reasonable protection against harmful interference when the equipment is operated in a commercial environment. This equipment generates, uses, and can radiate radio frequency energy and, if not installed and used in accordance with the instruction manual, may cause harmful interference to radio communications. Operation of this equipment in a residential area is likely to cause harmful interference in which case the user will be required to correct the interference at his own expense.

Caution: Changes or modifications not expressly approved by the party responsible for compliance could void the user's authority to operate the equipment.

### Image sharpening

Remove interference such as fog, rain, yellow sand, smoke, and snow in the atmosphere from viewed scenes for clearer, sharper images.

Image processing technology developed using the PENTAX PAIR lens system works to allow liquid particles such as fog and solid particles such as smoke and sand that obscure views to be removed for the first time ever on binoculars\*.

\* First binoculars in the world to be equipped with an atmospheric interference reduction function, as of September 2013 as researched by Ricoh.



Background hidden by fog



Background revealed using PAIR

### Anti-vibration

View clear images with no image shake even at high magnification using the included anti-vibration mechanism.



With function OFF



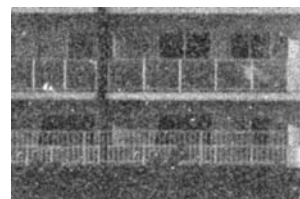
With function ON

### Twilight Mode

View objects in limited lighting situations where vision is difficult with the naked eye.



With function OFF



With function ON

### Main Specifications for the RICOH Enhanced Binoculars

System format	2D binocular output from the EVF for the input sensor image		
Output wavelength	Color/Monochrome		
Imaging system	Sensor	1/3" color CMOS sensor	
	With D/N filter toggle function		
	Imaging lens	Focal length	75 mm to 150 mm
		Aperture	f/2.8 to f/3.5
	Manual zoom, manual focus Auto iris unit (With DC iris ND)		
Min. shooting distance	5m		
Eyepiece system	Display panel	Organic EL panel	
		0.39-in.	
	No. of pixels	800x600 (Effective pixels: 720x480)	
Eye relief	20 mm (With -4 to +2 Diopter adj.)		

Eyepiece system	Eye interval adj. range	Manual (Eye interval: 62 mm to 72 mm)
	Binocular magnification	Approx. 6.6x to 13.2x
Apparent field of vision	D: 29.6°, H: 24.6°, V: 16.4°	
	Dimensions	225 mm (D) × 166 mm (W) × 83 mm (H)
Output	SD (SDHC) interface × 1	
	Image format	Movies   Motion JPEG (720x480, 30 fps, no audio)
Functions	Still images	JPEG (720x480)
	Atmospheric interference reduction	
	Emphasized area select	
	Twilight Mode	
	Image stabilization (Electronic)	
Exposure Compensation		
Date and time setting		
GPS (Current latitude and longitude positioning)		
Direction (Electronic compass)		

Functions	Display brightness	Power LED Lamp off
	Toshiba Write Once memory cards	
Dustproof/Waterproof	To IP64 standards	
Power supply	Battery (RICOH BT-10), Battery charger (RICOH BC-10)	
Operating temperature range	-10°C to +50°C	
Battery life	Over 200 min. at room temperature/charge	
Weight	Approx. 1,315 g (Body only)	
Accessories	RICOH NV-10A	Neck strap, User's Guide
	RICOH NV-10A KIT	Neck strap, User's Guide Battery (RICOH BT-10) Battery charger (RICOH BC-10)
Optional parts/accessories (Sold separately)	Battery (RICOH BT-10), Battery charger (RICOH BC-10)	



RICOH Enhanced Binoculars  
RICOH NV-10A KIT  
● Suggested retail price:  
Open pricing



RICOH BT-10 Battery  
● Suggested retail price:  
Open pricing



RICOH BC-10 Battery charger  
● Suggested retail price:  
Open pricing

\* Check the RICOH website for information on SD cards that work with the product. [http://www.ricoh.com/fa\\_security/security/binocular/nv-10a/](http://www.ricoh.com/fa_security/security/binocular/nv-10a/)

\* Any part of the specifications is subject to change without prior notice for product improvement purposes and other reasons.

● The SDHC logo are registered trademarks of SD-3, LLC.

## RICOH INDUSTRIAL SOLUTIONS INC.

For inquiries concerning the products in this catalog, please contact us as shown below.

[http://www.ricoh.com/fa\\_security/support/contact/](http://www.ricoh.com/fa_security/support/contact/)

For orders and inquiries: